



RAMJI

RAMJI AND ASSOCIATES

CIVIL ♦ MECHANICAL ♦ ELECTRICAL ♦ PLUMBING

TC 38/2526, Chalai P.O.
Thiruvananthapuram, Kerala
INDIA, 695036
Phone - 94470 79889
email - jramsr@gmail.com

client

GOVT. OF KERALA

architect

HABITAT TECHNOLOGY
GROUP, POOJAPPURA,
TRIVANDRUM

project

ENTRANCE PLAZA AT
SCIENCE CITY

title

DETAILS OF TOILET 1 & 2

project number

RAMJIHAB/SC/11/14

date

01/12/2014

drawn by

SHUJU

checked by

JRAM

sheet size

A1

scale

AS SHOWN

revisions

pr number

date

includes sheets

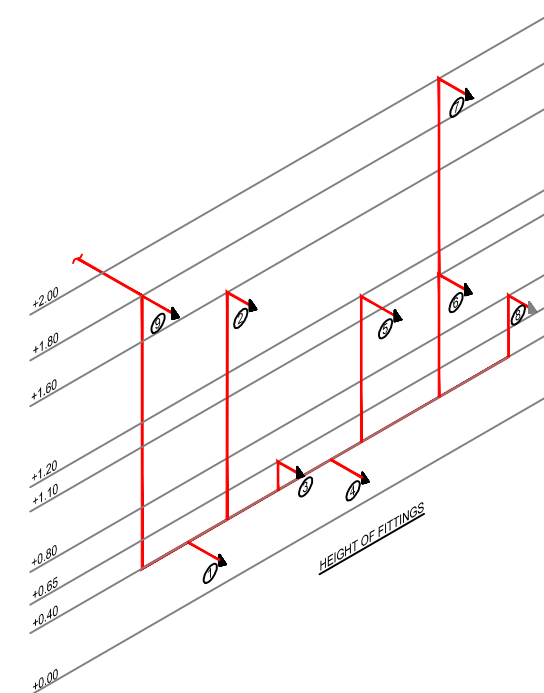
drawings shall not be scaled for dimensions.
written dimensions need to be followed.
this drawing is property of RAMJI and should
not be used or altered without their
permission.
All dimensions are in mm.

sheet number

P.EP.03



PLUMBING LAYOUT SHOWING WATER SUPPLY LINES IN TOILET 1&2
SCALE 1:30



LEGEND	
DT	DOUCHE TAP (HEALTH FAUCET)
AV	ANGLE VALVE
CSC	CONCEALED STOP COCK
FT	FLOOR TRAP
GRY	GREY LINE
BLK	BLACK LINE
MRR	MIRROR
DO	DOMESTIC WATER
FL	FLUSHING WATER
LBT	LONG BODY TAP
WB / CS	WASH COUNTER SUNK
WB / STD	WASH BASIN/STANDARD
TRG	TOWEL RING
TR	TOWEL ROD
EWC/S	STANDARD EUROPEAN WATER CLOSET WITH 'S' TRAP
UR / BT	URINAL WITH BOTTLE TRAP
CO	CLEAN OUT
	REDUCER
	WHEEL VALVE

①	ANGLE VALVE FOR WASH BASIN, LOW LEVEL FLUSHING CISTERN, SINK AND DOUCHE TAP
②	ANGLE VALVE FOR HIGH LEVEL FLUSHING CISTERN AND GEYSER
③	LONG BODY TAP FOR BATH
④	LONG BODY TAP FOR INDIAN WATER CLOSET
⑤	URINAL ANGLE VALVE
⑥	CONCEALED STOP COCK FOR SHOWER
⑦	SHOWER
⑧	MIXING UNIT
⑨	CONCEALED STOP COCK AT ENTRY